

**ITEM 27. PARKING – PITT STREET BETWEEN MARTIN PLACE AND
HUNTER STREET SYDNEY**

TRIM RECORD NO: 2015/071601

RECOMMENDATION

It is recommended that the Committee endorse the reallocation of parking on the eastern side of Pitt Street between Martin Place and Hunter Street as follows:

Interim measure:-

- (A) between the points 19.4 metres and 71.7 metres (9 spaces) south of Hunter Street as “Loading Zone 6am-6pm Mon-Fri, 4P Ticket 6pm-10pm Mon-Fri, 8am-10pm Sat, Sun & Public Holidays, Taxi Zone Other Times”.
- (B) between the points 71.7 metres and 82.6 metres (2 spaces) south of Hunter Street as “No Parking”.
- (C) between the points 82.6 metres and 108.4 metres (5 spaces) south of Hunter Street as “Taxi Zone”.

Final arrangement:-

- (D) between the points 19.4 metres and 71.7 metres (9 spaces) south of Hunter Street as “Loading Zone 6am-6pm Mon-Fri, 4P Ticket 6pm-10pm Mon-Fri, 8am-10pm Sat, Sun & Public Holidays, Taxi Zone Other Times”.
- (E) between the points 71.7 metres and 82.6 metres (2 spaces) south of Hunter Street as “No Parking”.
- (F) between the points 82.6 metres and 108.4 metres (5 spaces) south of Hunter Street as “Loading Zone 6am-6pm Mon-Fri, 4P Ticket 6pm-10pm Mon-Fri, 8am-10pm Sat, Sun & Public Holidays, Taxi Zone Other Times”.
- (G) between the points 108.4 metres and 144.4 metres (6 spaces) south of Hunter Street as “No Stopping”.
- (H) between the points 144.4 metres and 177.4 metres (6 spaces) south of Hunter Street as “Taxi Zone”.

DECISION

BACKGROUND

The City has been working with the Police to improve safety and public transport access especially for taxis and buses around the CBD.

The City has negotiated with Ministry of Transport, Transport for NSW and NSW Taxi Council to improve public access to taxi especially in late evening and early morning.

COMMENTS

Key stakeholders such as the NSW Police, Transport for NSW, NSW Taxi Council and NSW Taxi Drivers Association have been involved in the determination of new taxi zone sites that generate passenger activity.

It has been identified that George Street will shortly have restricted taxi access due to light rail construction. One site that already has issues for taxi access and operation is on George Street between King and Hunter Streets.

An alternative nearby site to George Street is the eastern side of Pitt Street between Martin Place and Hunter Street. This location can provide great access without being affected by light rail or other future projects in this part of the CBD.

It is proposed to provide a full-time taxi zone (6 spaces) on the eastern side of Pitt Street immediately north of Martin Place and extend the zone (14 spaces) to Hunter Street at night.

Currently, there is a Works Zone immediately north of Martin Place and as an interim measure, it is proposed to provide a full-time taxi zone (5 spaces) on the eastern side of Pitt Street, north of Angel Place and extend the zone (9 spaces) to Hunter Street at night.

Once the Works Zone is removed, and then implement the full and part-time taxi arrangement immediately north of Martin Place.

CONSULTATION

The City has consulted with the Police, Transport for NSW, Taxi Council NSW and properties on Pitt Street.

The City sent out 1,144 consultation letters and received one response in support of the proposal and none against.

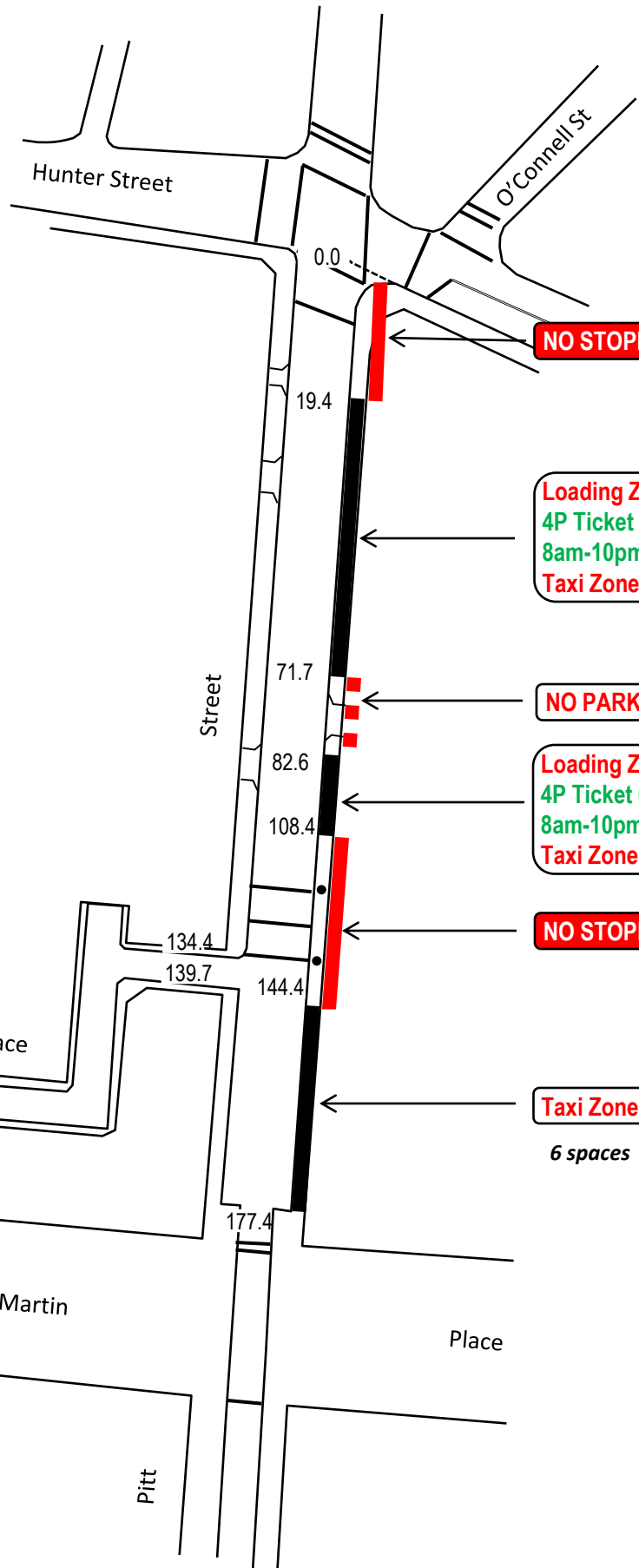
FINANCIAL

Funds are available in the current budget.

ATTACHMENTS

Lana Zegura, Senior Project Manager

Col Warne, Traffic Project Manager



NO STOPPING

Loading Zone 6am-6pm Mon-Fri
4P Ticket 6pm-10pm Mon-Fri
8am-10pm Sat-Sun Public Holidays
Taxi Zone Other Times

9 spaces

NO PARKING

Loading Zone 6am-6pm Mon-Fri
4P Ticket 6pm-10pm Mon-Fri
8am-10pm Sat-Sun Public Holidays
Taxi Zone Other Times

5 spaces

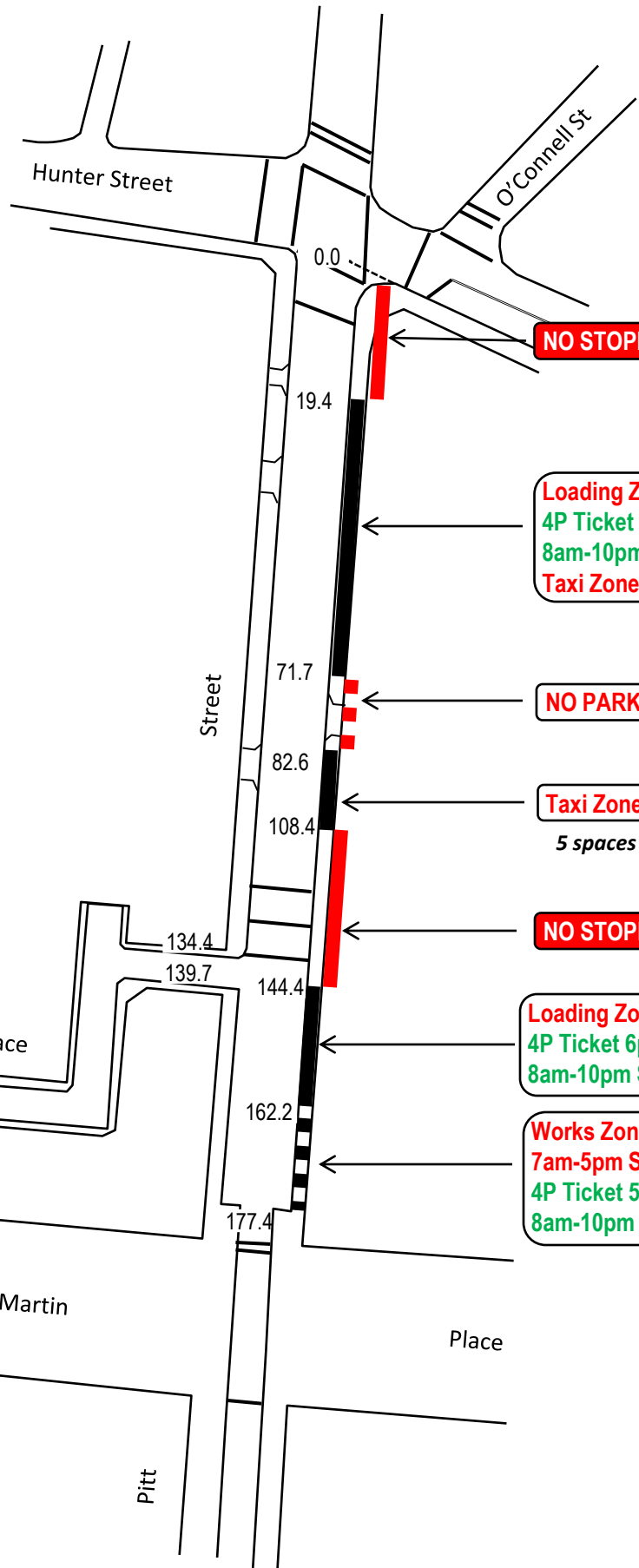
NO STOPPING

Taxi Zone

6 spaces

Taxi spaces
6 Full-time spaces
14 Part-time
Total 20 spaces

Final arrangements



NO STOPPING

Loading Zone 6am-6pm Mon-Fri
4P Ticket 6pm-10pm Mon-Fri
8am-10pm Sat-Sun Public Holidays
Taxi Zone Other Times

9 spaces

NO PARKING

Taxi Zone

5 spaces

NO STOPPING

Loading Zone 6am-6pm Mon-Fri
4P Ticket 6pm-10pm Mon-Fri
8am-10pm Sat-Sun Public Holidays

Works Zone 7am-7pm Mon-Fri
7am-5pm Sat
4P Ticket 5pm-10pm Sat
8am-10pm Sun Public Holidays

Taxi spaces
 5 Full-time spaces
 9 Part-time
Total 14 spaces

Interim if Works Zone in operation